

101 RIVERVINE COURT, WHITE SANDS



0447 263 549



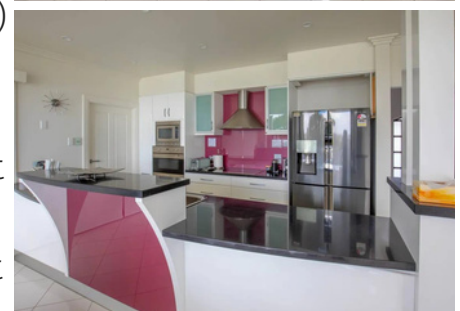
[101 Rivervine Court](#)

PROPERTY INFORMATION SHEET

BEDROOMS - SLEEPS 10

(All rooms contain fresh linen, pillows, quilts and air conditioning)

- Bedroom 1 sleeps 2 – King bed (with ensuite, built in robe, balcony and TV)
- Bedroom 2 sleeps 2 - King bed (with build in robe and balcony)
- Bedroom 3 sleeps 2 – King bed (with build in robe and balcony)
- Bedroom 4 sleeps 2 – King split (king or two singles) (with built in robe)
- Bedroom 5 sleeps 2 – King split (king or two singles) (with built in robe)





KITCHEN

- Double Fridge/freezer, Dishwasher, electric cooktop and stove, Microwave, sink, toaster, electric kettle, Nespresso Coffee Maker (uses pods), Pantry, crockery for 10 people, cutlery, cookware, utensils glasses, tea towels, dishwashing liquid & tablets, and general cleaning items.

DINING

- Table to seat 10, double bi-fold doors to BBQ area.

LOUNGES x2

- Lounges, TVs, Sound system, air conditioned, Bluetooth speaker, Pool table.

LAUNDRY

- Washing machine and clothes dryer.



BATHROOMS x3 (INCLUDING ENSUITE)

- Shower, vanity area, towels, face washers, bathmat and toilet.
 - Ensuite with a spa.

OUTDOOR AREA

- Outdoor table, 4 bench seats, Fire Pit, BBQ kitchen.

WATERFRONT

- Private pontoon, lawned to the river.

BALCONY

- Outdoor chairs, outdoor lounge, BBQ and sunbed



TENANTS REQUIRED TO BRING

- River toweling for all guests.
- Personal toiletries including sunscreen and Aeroguard.
- Food and Drinks including; tea, coffee, salt and pepper.
- Kitchen basics like drinking water, gladwrap, alfoil, and paper towels (small amount supplied)

THINGS TO KNOW ABOUT THE HOUSE

- Filtered water to the entire house.
 - Wifi Available
- Boat ramp only a few minutes away.
- Split Reverse cycle air-conditioning to all rooms, please turn off during the day if not required & ensure all air conditioner lights and electricity is switch off on departure.
- Township of Murray Bridge is approximately 10minutes by road. It has a comprehensive Information Centre, supermarkets, hotels, bakeries, cafes, hardware and petrol stations
- C-Bus system throughout the home.



**RIVER SHACK
RENTALS**



CONDITIONS OF USE

- Strictly No Pets
 - No smoking
- Fires in fire pit only and subject to CFS regulations. (Fire must be extinguished with unattended)
 - No tents or campers, or caravans.
 - No vehicles on lawned areas
- Houseboats are not to be moored at property,
- Occupancy is based on leaving the premises in a clean and tidy state – as found,
 - All breakages and damages must be paid for.
- House security – when leaving please ensure all windows are closed and front and rear doors locked, blinds down air conditioning and lights are off
 - Remove all food and rubbish and put in wheelie bin
 - Place all rubbish in the wheelie bin located near the driveway.
 - No trespassing onto neighbouring properties
 - No Events/parties/hens or stag groups
- Return all towels/inflatable/cushions table tennis equipment etc taken from the house to be returned to where it was found – this prevents them going into the river.
- All dirty towels, dish towels and linen to be left in laundry on departure
 - Key safe access – code will be forwarded to you prior to your stay.
- Maintenance – if during your stay you have a service malfunction please phone river shack rentals on 0447 263 549

