



# 1864 EAST FRONT ROAD, YOUNG HUSBAND



0447 263 549



1864 East Front Road

## PROPERTY INFORMATION SHEET

### BEDROOMS

Guests will need to supply quilts, pillows, sheets & towelling (quilts and pillows are provided)

Bedroom 1 sleeps 4 – Queen bed and Set of bunks  
Bedroom 2 sleeps 4 – Queen bed and Set of bunks  
(Lower lounge has 2x futon lounges and a child trundle can be provided.)





## KITCHEN / DINING

Dishwasher, microwave, fridge/freezer, electric stove / oven, toaster, kettle, crockery and cutlery, cookware and utensils, glasses and tea towels.

Dining table with 8 chairs, and three seater sofa.

## LOUNGE

- TV and DVD player
- Air conditioner
- 2x Futon lounges

## BATHROOM

PLEASE BRING YOUR OWN TOWELLING

- Shower, 2x Toilet, vanity and bath mat

## DECK

- BBQ
- Outdoor table seats 8

## WATERFRONT

- Firepit
- Communal timber jetty
- Maximum 2 water vessels

## THINGS TO KNOW ABOUT THE HOUSE

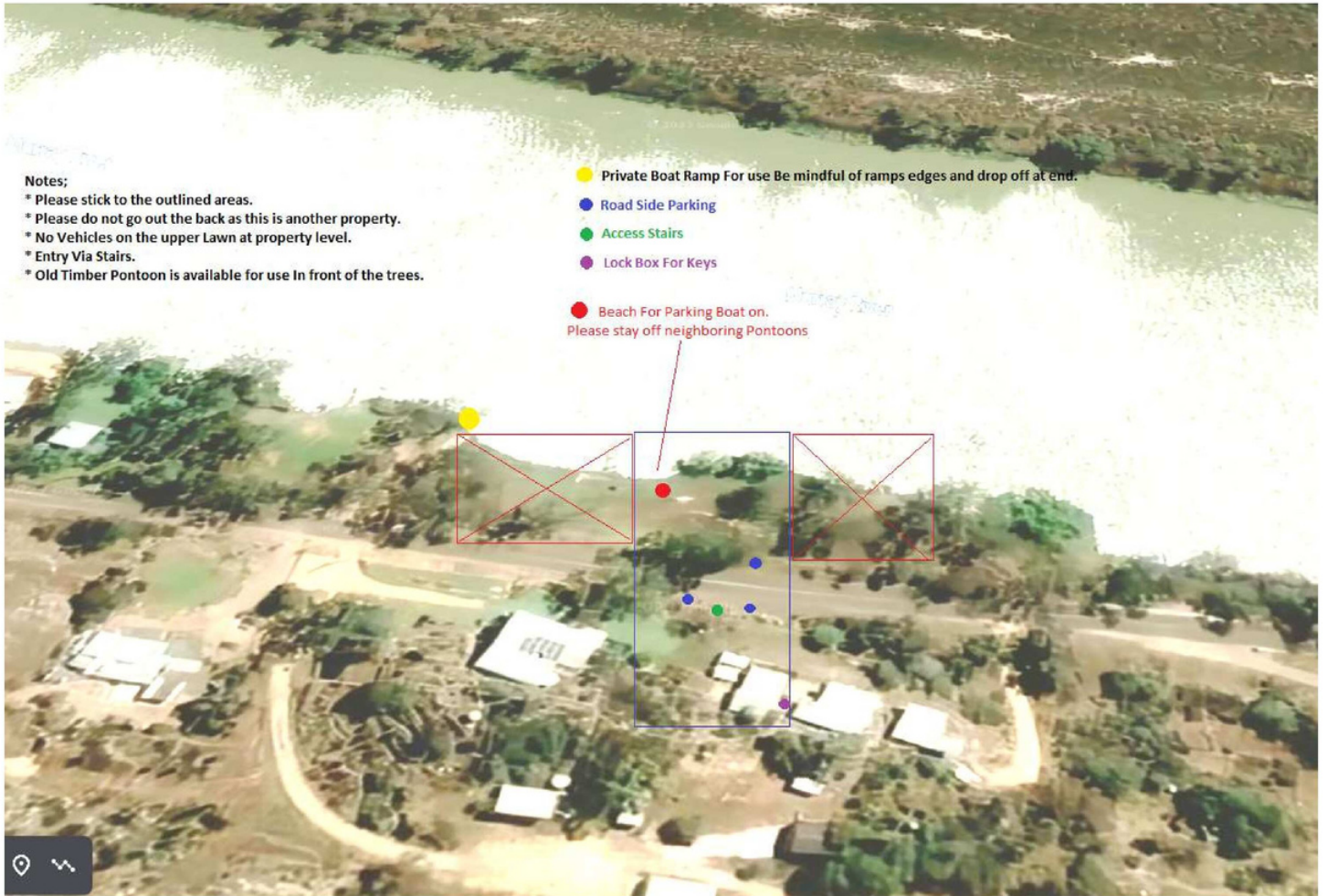
- Guests will need to supply quilts, pillows, sheets & towelling.
- River water to the entire house except the toilets - please supply own drinking water
- Please only access the lawn for parking for disabled, no cars to be left on the lawn and are to be moved to lower road side clearing near stairs.
- Boat ramp is 50 meters away, shop & petrol located 15 minutes away at Bowhill.
- House trained pets welcomed, no dogs off leash outside and pet waste must be picked up and placed into bins.



## Conditions of Use

- No smoking inside or on the deck. Smoking close to the fence on the lawn area if required. Cigarette butts to be placed in the bin.
- Fires are allowed in the fire pit by the river subject to current CFS regulations – fire must be extinguished when unattended.
  - No tents, campers or caravans
  - No Vehicles on lawn areas
- Occupancy is limited to a maximum of 10 guests only including day visitors, unless approved prior.
  - On Departure please leave the premises in a clean and tidy state.
    - No trespassing onto neighboring properties.
    - Houseboats are not to be moored at the property
  - All breakages and damages must be paid for – please advise River shack rentals
    - Rubbish into council bins and placed at street upon leaving.
- Please turn off air conditioner and all electrical appliances when not in use and on departure.
- No boats or jet skis to be launched from the river frontage – please use the boat ramp.
  - Strickly no parties
- Security - when leaving please ensure all windows, doors, & gates are locked & all lights, air-conditioning units are turned off
  - Please be respectful of Neighbours





**Notes;**

- \* Please stick to the outlined areas.
- \* Please do not go out the back as this is another property.
- \* No Vehicles on the upper Lawn at property level.
- \* Entry Via Stairs.
- \* Old Timber Pontoon is available for use In front of the trees.

● Private Boat Ramp For use Be mindful of ramps edges and drop off at end.

● Road Side Parking

● Access Stairs

● Lock Box For Keys

● Beach For Parking Boat on.  
Please stay off neighboring Pontoons

